

2002 RHYTHMIC GYMNASTICS WORLD CHAMPIONSHIPS

JULY 10 - 14, 2002 NEW ORLEANS - USA

Exercices d'ensemble

Group exercises

Compétition I:

Competition I:

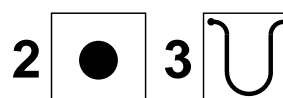
Time: 21:11

Date: 13-07-2002

Page: 1

CLASSEMENT FINAL

FINAL RESULTS



Rg.	Nb.	Fédération	Code	Tech.	Art.	Exec.	Pen.	Tot. 5	Tech.	Art.	Exec.	Pen.	Tot. 2+3	TOTAL
Rk.	Nb.	Federation	Noc											
1.	16	RUSSIA	RUS	8.250	8.100	7.750	0.60	23.500	8.600	8.300	8.650		25.550	49.050
2.	22	BELARUS	BLR	7.800	7.900	7.850	0.60	22.950	8.500	8.000	8.225		24.725	47.675
3.	10	GREECE	GRE	7.500	7.900	7.500	0.80	22.100	8.300	8.500	8.500		25.300	47.400
4.	12	BULGARIA	BUL	7.500	8.100	7.650	0.50	22.750	7.800	8.100	8.400		24.300	47.050
5.	1	ITALY	ITA	7.200	7.400	7.550	0.60	21.550	8.100	7.900	8.000		24.000	45.550
6.	23	UKRAINE	UKR	7.400	7.850	7.850	0.50	22.600	7.900	7.100	7.850	0.50	22.350	44.950
7.	18	CHINA	CHN	7.750	6.700	7.300	0.50	21.250	7.200	7.000	8.225	0.50	21.925	43.175
8.	21	BRAZIL	BRA	7.400	6.800	7.150	0.50	20.850	8.000	6.900	6.850	0.50	21.250	42.100
9.	13	SPAIN	ESP	7.000	7.400	7.100	0.50	21.000	6.500	6.800	7.750	0.50	20.550	41.550
10.	3	JAPAN	JPN	6.300	7.050	7.000	0.50	19.850	7.300	6.900	7.600	0.50	21.300	41.150
11.	11	POLAND	POL	6.600	6.300	7.300	0.50	19.700	7.100	7.100	7.700	0.50	21.400	41.100
12.	7	CANADA	CAN	6.300	6.900	7.050	0.60	19.650	7.400	6.750	7.675	0.50	21.325	40.975
13.	25	UNITED STATES	USA	6.700	6.800	6.850	0.70	19.650	7.300	5.900	7.800	0.50	20.500	40.150
14.	17	GERMANY	GER	6.200	6.900	6.450	0.70	18.850	6.100	6.400	7.100	0.50	19.100	37.950
15.	20	FRANCE	FRA	6.300	6.450	5.950	0.50	18.200	6.100	6.400	7.600	0.50	19.600	37.800
16.	5	HUNGARY	HUN	5.700	7.000	6.500	0.50	18.700	6.400	6.350	6.700	0.50	18.950	37.650
17.	24	SWITZERLAND	SUI	6.300	6.500	5.850	0.50	18.150	5.100	7.100	7.025	0.50	18.725	36.875
18.	9	SLOVAKIA	SVK	5.400	6.200	6.100	0.60	17.100	6.200	6.350	6.950	0.50	19.000	36.100
19.	19	KOREA	KOR	4.000	6.000	6.000	0.50	15.500	5.400	7.000	6.575	0.50	18.475	33.975
20.	15	CUBA	CUB	5.100	5.600	4.000	0.50	14.200	5.300	5.600	4.800	0.50	15.200	29.400